

## PREVIEW: W.EASY BOX 2.0

The new W.EASY Box 2.0 fulfills all technological requirements to a modern diagnostic system.



# Many features ensure an easy and fast working:

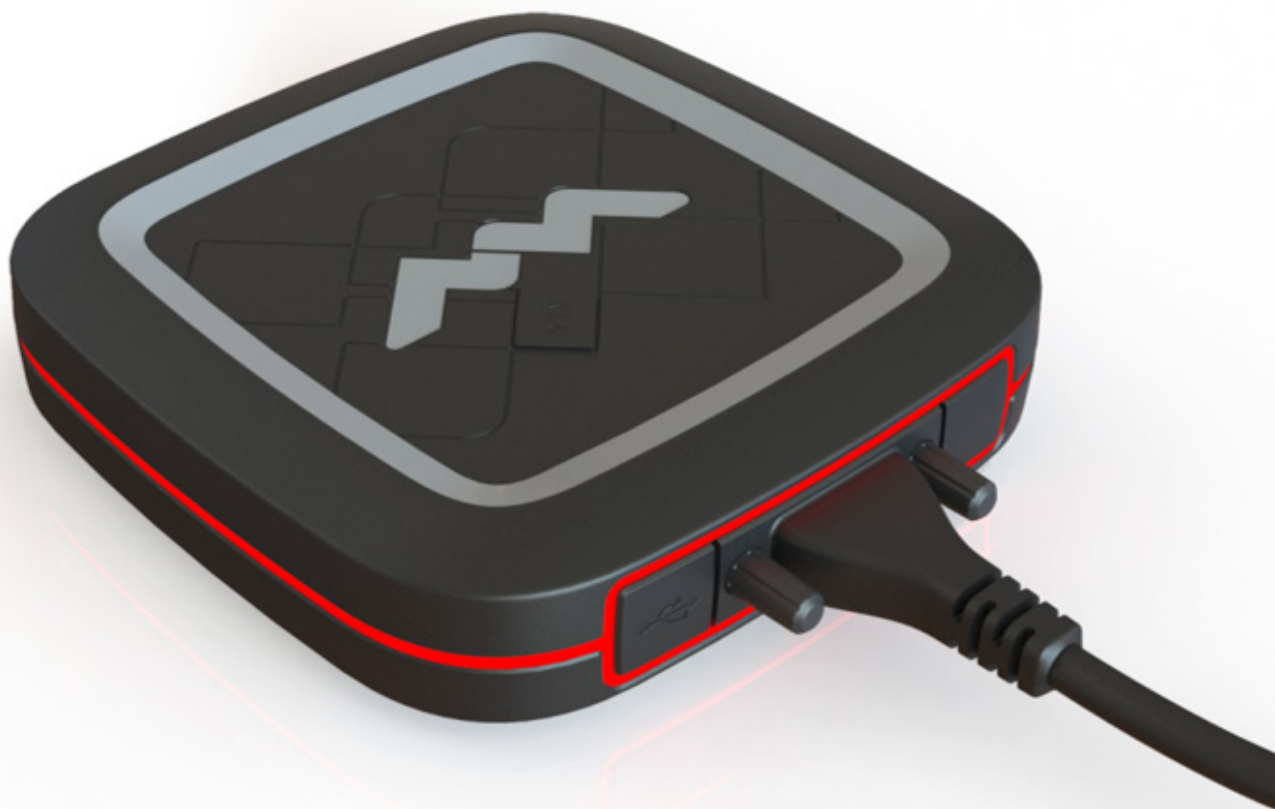
## LED

**Optimal diagnosis by visual display:** Clear and visual display of the current communication status with the innovative, **multi-colored 360° LED ring** provides a secured and optimal diagnosis.

**Immediate LED indicator display:** The status of the vehicle battery is immediately indicated by a colored **LED indicator display** and prevents unnecessary troubleshooting.



**Connection just like at home:** The 3-in-1 solution allows now the connection establishment via USB, Bluetooth and WiFi, as well as an **intelligent hotspot solution**. An immediate overview of the **currently activated WiFi mode** is possible due to the **LED indicator display** on the **back of the box**.

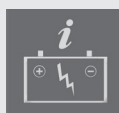


Seien Sie gut gerüstet für die Zukunft mit der neuen W.EASY Box 2.0!



Integrated state-of-the-art electronics are combined in an innovative design and handy format.

The following additional functions are also covered by the new W.EASY Box 2.0:



- Voltage monitoring of the vehicle battery



- Faster firmware update process
- Quick-Scan
- WABCO-Scan for trailer



- Integrated flight recorder for mobile data recording



- Tough enough for use in the workshop
- Integrated original WABCO system diagnostic
- Implemented original Haldex trailer diagnostic
- EOBD / WWH-OBd standard



- OBD 16 pin connector with LED light



- Fulfills the technical requirements for diagnostic work on the latest Euro 6 vehicle platforms



WABCO WÜRTH  
Workshop  
Services GmbH

Benzstraße 7  
74653 Künzelsau  
T +49 (0)7940/9818 63-0  
F +49 (0)7940/9818 63-5555  
info@wabcowuerth.com  
www.wabcowuerth.com



**The W.EASY Box 2.0 in an innovative and appealing design.**

Available from February 2017

